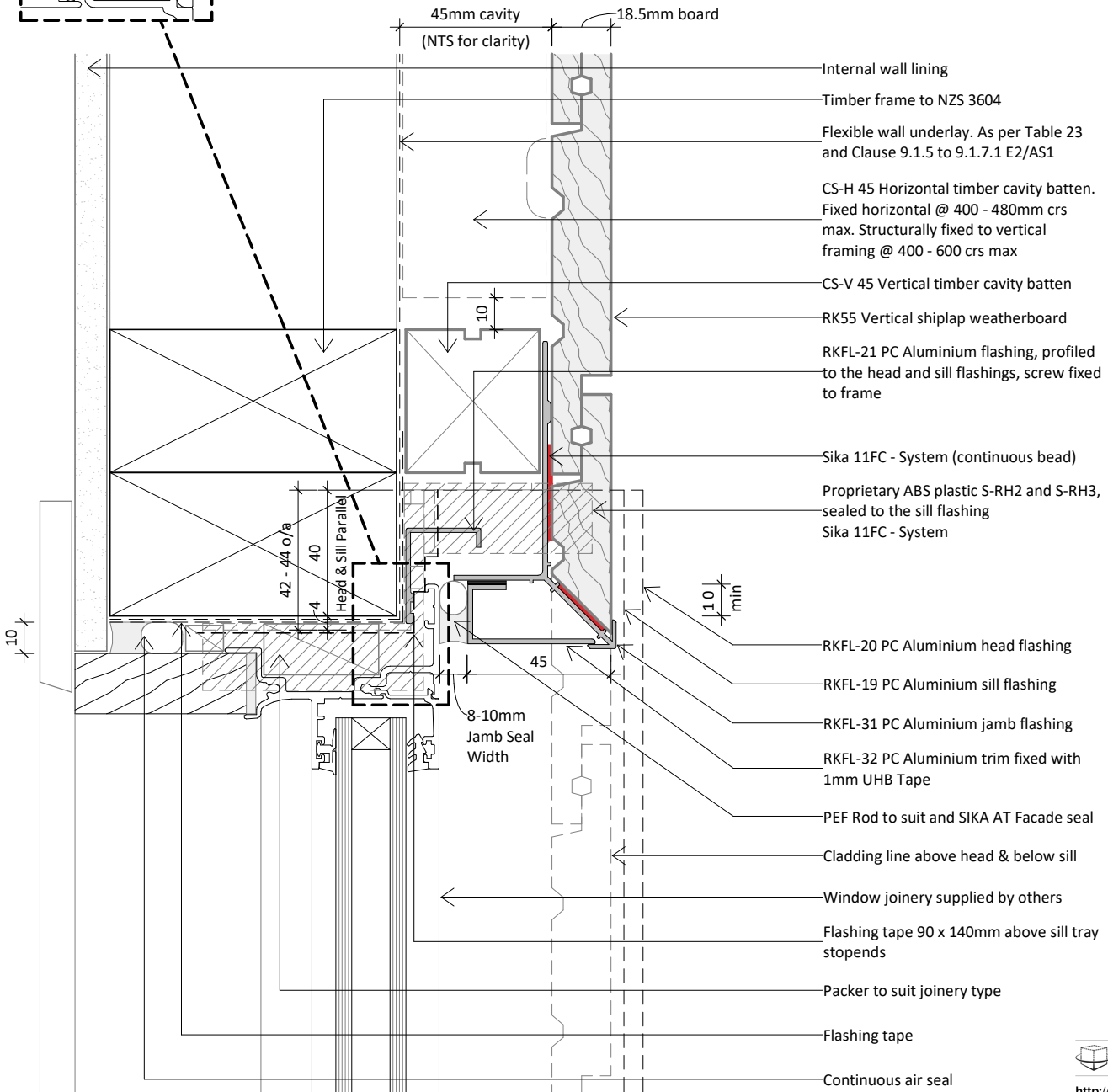


**Reveal Depth Allowance**  
 Depends on:  
 -flashing tape and  
 stopend buildup



interactive assembly instructions available

<http://wksp.nz/rki-rwf-wf3>



Get **WORKINGSPEC** from Apple App Store/Google Play

1. Scope as per Clauses 1.0 and 9.4 E2/AS1
2. Compatibility of materials as per Tables 20-22 E2/AS1
3. The flashing system relies upon the joinery meeting the requirements of NZS 4211 and for the relevant building wind pressures
4. INTERSET flashings are designed exclusively for use with the Rosenfeld Kidson Cedarscreen Vertical 45mm system
5. Windows to have a 10mm perimeter clearance for application of a continuous air seal
6. Non-exposed flashings powdercoated in Duralloy. Exposed flashings powdercoated in Duratrec
7. Cavity Batten System in-line with Cedarscreen 45mm Vertical System

**INTERSET**  
 RECESSED WINDOWS FOR TIMBER CLADDING

[www.rosenfeldkidson.co.nz](http://www.rosenfeldkidson.co.nz)  
[www.cedarscreen.co.nz](http://www.cedarscreen.co.nz)

Postal Address: P O Box 621,  
 Shortland Street, Auckland 1140

Auckland Branch:  
 T: +64 9 573 0503  
 F: +64 9 573 0504  
 513 Mount Wellington Highway  
 Mount Wellington, Auckland 1060

Christchurch Branch:  
 T: +64 3 349 3316  
 F: +64 3 349 3317  
 15 Edmonton Road  
 Hornby, Christchurch 8042

Title **Window Jamb Right Hand Aluminium Trim Detail**

Drawing

**RK-FU-23**

Scale 1 : 2 @ A4

Date 14.10.2020